

Report of North East Divisional Community Safety Partnership

Report to Inner North East Area Committee

Date: 18th June 2012

Subject: North East Divisional Community Safety Partnership Annual Report

Are specific electoral Wards affected?	<input checked="" type="checkbox"/> Yes	<input type="checkbox"/> No
If relevant, name(s) of Ward(s): Chapel Allerton Roundhay Moortown		
Are there implications for equality and diversity and cohesion and integration?	<input type="checkbox"/> Yes	<input checked="" type="checkbox"/> No
Is the decision eligible for Call-In?	<input type="checkbox"/> Yes	<input checked="" type="checkbox"/> No
Does the report contain confidential or exempt information?	<input type="checkbox"/> Yes	<input checked="" type="checkbox"/> No
If relevant, Access to Information Procedure Rule number: Appendix number:		

Summary of main issues

1. To update ward members of the overall performance of the North East Divisional Community Safety Partnership and Neighbourhood Policing Teams for 2011/12
2. To provide an overview of the work undertaken by the partnership within the locality to reduce crime and disorder

Recommendations

3. The Area Committee is asked to note the contents of this report of the North East Divisional Community Safety Partnership.
4. Members are asked to continue supporting the Divisional Community Safety Partnership in relation to prioritising and tackling Burglary Dwelling during 2012/13 through partnership work at neighbourhood level.

1 Purpose of this report

1.1 The report will focus on the following key issues:

- Update Members on progress and outputs of the Neighbourhood Management Tasking Arrangements
- Report on Thematic Sub Groups and activities
- Report on the Performance of the NE Police Division and partnership
- Summary of ward crime statistics, public confidence and user satisfaction
- Report on multi agency 'Operation Champions'
- Report on agreed community initiatives funded via Proceeds of Crime confiscations (POCA).

2 Background information

2.1 This report provides Members of the Area Committee with an overview of the performance of the North East Divisional Community Safety Partnership and ward based Neighbourhood Policing Teams. It will also include details of the key initiatives that have been delivered in local communities to reduce crime and disorder. The report focuses upon the period 1st April 2011 to 31st March 2012.

3 Main issues

3.1 Performance Framework

3.2 The Divisional Community Safety Partnership (DCSP) will continue to develop activity and management performance against strategic outcomes of the city, defined by The Safer and Stronger Communities Board Partnership plan 2011-2015 which will focus on delivering the following strategic priorities:

- Reducing crime levels and its impact across Leeds
- Effectively Tackle and Reduce Anti-social behaviour in our Communities

3.2 We are currently awaiting ratification of the Safer Leeds performance targets and performance framework for 2012/13 (North East Police Divisional Targets are outlined in Appendix A)

3.3 Attached is an updated structure chart for the North East Divisional Community Safety Partnership (see Appendix B) with details of the relevant lead officers. The structure is continuously reviewed to ensure delivery against new priorities

3.4 Operation Champion

3.5 Several 'Multi agency operation days of action' have been carried out across the ward during 2011/12 and have been based around themes and deployed into areas of concern. Due to the successful embedding of partnership work and daily problem solving into core business and improved communication between partner agencies, the need for intensive six weekly planned operations has eased . We

will continue to deliver operations during 2012/13 with a minimum requirement of four operations per year per Neighbourhood policing team

3.6 POCA

- 3.7 Following the success of the project over the last four years, the North East Division allocated a total of £38,145 funding confiscated from criminals under the Proceeds of Crime Act to the Divisional Community Safety Partnership during 2011/12 to continue to support local groups with community projects/activities. In total, across the whole division, we approved and funded 99 applications and spent £28,519. The remaining balance was carried forward to the new financial year and has been spent during April/May. We have received numerous emails showing appreciation and thanks for support. Information regarding the awards continue to be advertised in the neighbourhood management / Neighbourhood Policing Team newsletters and on the police Neighbourhood Policing Team websites. We will be continuing the scheme into 2012/13 (Appendix C provides a summary of projects funded in the Inner North East area)

3.8 Public Confidence and Satisfaction

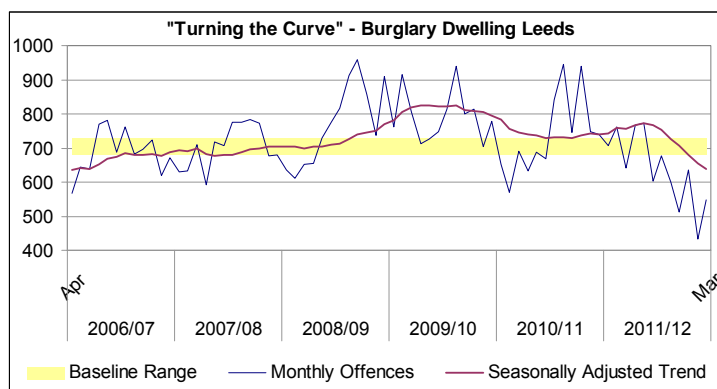
- 3.9 North East Leeds continues to have the highest Public Confidence in Local Policing during 2011/12 at 62.0 % (March 2011) compared with the West Yorkshire force average of 54.6 %. The RAM neighbourhood policing team has the second highest confidence rate across Neighbourhood Policing Teams in the division followed by Chapel Allerton.
- 3.10 Operation Confidence commenced in February 2009 and is a contributing factor to the high rates of public confidence. The North East Division produces 11 neighbourhood management newsletters detailing partnership activity around crime and grime within the Neighbourhood Policing Team and delivers to 128,000 households three times a year. Feedback from residents continues to be positive and illustrates they are pleased to be kept informed around crime and grime issues. Funding has been secured for 2012/13 and contributions have been agreed by North East Police Division, East North East Homes, Safer Leeds Partnership and Aire Valley Homes.
- 3.11 **Joint Police Community Safety Officer Protocol between Leeds City Council and West Yorkshire Police**
- 3.12 In April 2011, the Council agreed to extend the existing arrangement with West Yorkshire Police Authority to retain the level of Police community safety officers (PCSO'S) in Leeds. The investment by the Council was awarded on the basis of strengthening arrangements between PCSOs, Neighbourhood Policing Teams and Leeds City Council Services. One particular aim is to support the improved delivery of locally identified environmental priorities and this was supported at the Council's Executive Board in September 2011.
- 3.13 There are strong links between crime and disorder and environmental issues and this protocol is aimed at ensuring the quality of the local environment is incorporated into the work of crime reduction partnerships. It is important that the fear of crime, heightened by issues such as graffiti, litter and abandoned vehicles,

is addressed. This protocol provides a coordination and tasking mechanism for Neighbourhood Policing Teams , Police community safety officers and Council Officers to jointly deliver better outcomes in respect of environmental issues and enforcement in localities. The North East Divisional community safety partnership are fully supporting the implementation of the newly agreed 'Environmental Improvement Zones. In North East the PCSOs and neighbourhood policing teams are playing a pro-active and re-active role in addressing environmental issues . In Feb /March 2012 the East North East environmental action team have delivered a six week training input on Divisional training days to all PCSO's to ensure that they have a greater knowledge and understanding of environmental issues to enable them to contribute effectively . In addition the neighbourhood policing teams have teamed up with East North East Locality team staff to work together on monthly operations targeting waste carriers moving across our areas. This has been done by setting up road checks and routine stopping of waste carrier vehicles in order to complete checks on such vehicles.

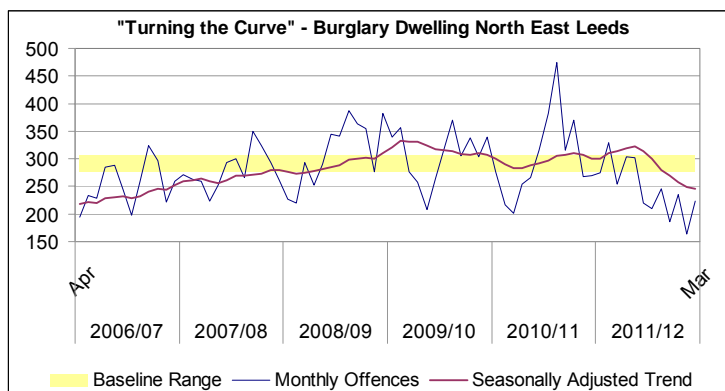
3.14 **Burglary Dwelling**

3.15 Burglary Dwelling remains a key pressure in relation to allocation of resources both staffing and financial . Tackling burglary dwelling remains the key priority within the Division and across the whole of Leeds, we are working closely with Safer Leeds Strategic burglary group and partner agencies to maximise opportunities for closer working and sharing good practise and continue to deliver initiatives at a local neighbourhood level.

3.16 Overall a very successful Year, burglary dwellings are down 13.6% across the whole city on the same period last year (1207 less offences)



3.17 Overall Year to date offences for North East Leeds are down 18.4% on the same period last year. (669 less offences)



3.18 Ward Risk Matrix

3.19 The below table illustrates In Leeds there are currently nine strategic localities of concern. Within the Inner North East Committee area the Chapel Allerton ward is currently highlighted as an area of concern.

Ward	Apr-11	May-11	Jun-11	Jul-11	Aug-11	Sep-11	Oct-11	Nov-11	Dec-11	Jan-12	Feb-12	Mar-12	12 Month Total	12 Month % Change	
Hyde Park & Woodhouse	Very High Concern	Very High Concern	High Concern	High Concern	High Concern	High Concern	High Concern	High Concern	High Concern	High Concern	High Concern	High Concern	597	36.0%	
Bramley & Stanningley	High Concern	High Concern	High Concern	High Concern	High Concern	High Concern	High Concern	High Concern	High Concern	High Concern	High Concern	High Concern	420	8.5%	
Burmantofts & Richmond Hill	High Concern	High Concern	High Concern	High Concern	High Concern	High Concern	High Concern	High Concern	High Concern	High Concern	High Concern	High Concern	407	-29.5%	
Headingley	High Concern	High Concern	High Concern	High Concern	High Concern	High Concern	High Concern	High Concern	High Concern	High Concern	High Concern	High Concern	407	3.3%	
Armley	High Concern	High Concern	High Concern	High Concern	High Concern	High Concern	High Concern	High Concern	High Concern	High Concern	High Concern	High Concern	390	-34.6%	
Gipton & Harehills	High Concern	High Concern	High Concern	High Concern	High Concern	High Concern	High Concern	High Concern	High Concern	High Concern	High Concern	High Concern	383	0.3%	
Killingbeck & Seacroft	High Concern	High Concern	High Concern	High Concern	High Concern	High Concern	High Concern	High Concern	High Concern	High Concern	High Concern	High Concern	361	-16.2%	
Kirkstall	High Concern	High Concern	High Concern	High Concern	High Concern	High Concern	High Concern	High Concern	High Concern	High Concern	High Concern	High Concern	358	-32.7%	
Chapel Allerton	High Concern	High Concern	High Concern	High Concern	High Concern	High Concern	High Concern	High Concern	High Concern	High Concern	High Concern	High Concern	309	-29.1%	
Cross Gates & Whinmoor	High Concern	High Concern	High Concern	High Concern	High Concern	High Concern	High Concern	High Concern	High Concern	High Concern	High Concern	High Concern	298	5.7%	
Farnley & Wortley	High Concern	High Concern	High Concern	High Concern	High Concern	High Concern	High Concern	High Concern	High Concern	High Concern	High Concern	High Concern	290	-16.9%	
Temple Newsam	High Concern	High Concern	High Concern	High Concern	High Concern	High Concern	High Concern	High Concern	High Concern	High Concern	High Concern	High Concern	248	-28.5%	
Calverley & Farsley	High Concern	High Concern	High Concern	High Concern	High Concern	High Concern	High Concern	High Concern	High Concern	High Concern	High Concern	High Concern	246	0.8%	
Pudsey	High Concern	High Concern	High Concern	High Concern	High Concern	High Concern	High Concern	High Concern	High Concern	High Concern	High Concern	High Concern	245	7.9%	
Weetwood	High Concern	High Concern	High Concern	High Concern	High Concern	High Concern	High Concern	High Concern	High Concern	High Concern	High Concern	High Concern	245	-17.2%	
Moortown	High Concern	High Concern	High Concern	High Concern	High Concern	High Concern	High Concern	High Concern	High Concern	High Concern	High Concern	High Concern	238	-10.2%	
Roundhay	High Concern	High Concern	High Concern	High Concern	High Concern	High Concern	High Concern	High Concern	High Concern	High Concern	High Concern	High Concern	225	-19.6%	
Beeston & Holbeck	High Concern	High Concern	High Concern	High Concern	High Concern	High Concern	High Concern	High Concern	High Concern	High Concern	High Concern	High Concern	212	-4.9%	
City & Hunslet	High Concern	High Concern	High Concern	High Concern	High Concern	High Concern	High Concern	High Concern	High Concern	High Concern	High Concern	High Concern	206	8.4%	
Middleton Park	High Concern	High Concern	High Concern	High Concern	High Concern	High Concern	High Concern	High Concern	High Concern	High Concern	High Concern	High Concern	193	4.3%	
Alwoodley	High Concern	High Concern	High Concern	High Concern	High Concern	High Concern	High Concern	High Concern	High Concern	High Concern	High Concern	High Concern	163	-12.8%	
Adel & Wharfedale	High Concern	High Concern	High Concern	High Concern	High Concern	High Concern	High Concern	High Concern	High Concern	High Concern	High Concern	High Concern	161	0.0%	
Horsforth	High Concern	High Concern	High Concern	High Concern	High Concern	High Concern	High Concern	High Concern	High Concern	High Concern	High Concern	High Concern	156	-37.6%	
Morley North	High Concern	High Concern	High Concern	High Concern	High Concern	High Concern	High Concern	High Concern	High Concern	High Concern	High Concern	High Concern	141	-10.2%	
Morley South	High Concern	High Concern	High Concern	High Concern	High Concern	High Concern	High Concern	High Concern	High Concern	High Concern	High Concern	High Concern	109	-12.1%	
Rothwell	High Concern	High Concern	High Concern	High Concern	High Concern	High Concern	High Concern	High Concern	High Concern	High Concern	High Concern	High Concern	99	-26.1%	
Garforth & Swillington	High Concern	High Concern	High Concern	High Concern	High Concern	High Concern	High Concern	High Concern	High Concern	High Concern	High Concern	High Concern	90	-31.3%	
Guiseley & Rawdon	High Concern	High Concern	High Concern	High Concern	High Concern	High Concern	High Concern	High Concern	High Concern	High Concern	High Concern	High Concern	87	-30.4%	
Harewood	High Concern	High Concern	High Concern	High Concern	High Concern	High Concern	High Concern	High Concern	High Concern	High Concern	High Concern	High Concern	87	-26.9%	
Otley & Yeadon	High Concern	High Concern	High Concern	High Concern	High Concern	High Concern	High Concern	High Concern	High Concern	High Concern	High Concern	High Concern	87	-42.0%	
Kippax & Methley	High Concern	High Concern	High Concern	High Concern	High Concern	High Concern	High Concern	High Concern	High Concern	High Concern	High Concern	High Concern	77	-24.5%	
Ardsley & Robin Hood	High Concern	High Concern	High Concern	High Concern	High Concern	High Concern	High Concern	High Concern	High Concern	High Concern	High Concern	High Concern	74	-18.7%	
Wetherby	High Concern	High Concern	High Concern	High Concern	High Concern	High Concern	High Concern	High Concern	High Concern	High Concern	High Concern	High Concern	73	-6.4%	

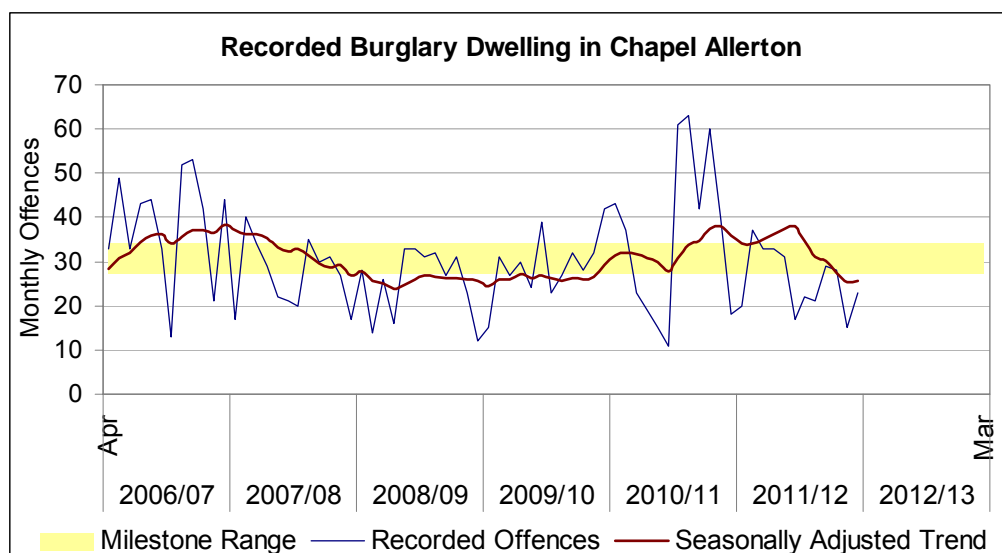
Colour Key

- Very High Concern
- High Concern
- Some Concern
- Low Concern

Strategic Area

3.20 Chapel Allerton Ward

- 3.21 An outcome based accountability session was delivered in December 2011 with key stakeholders and an action plan was developed around key strands including offender management, stolen goods market, reducing victimisation and crime reduction . Further analysis of burglaries in the ward identified the ‘Meanwood ‘ area as the greatest hotspot to focus multi agency work . Since the implementation of the action plan we have delivered a target hardening initiative on a fortnightly basis in the top 40 streets identified across the ward , we were successful in securing funding from East North East Homes for ALMO properties and secured 7.5k locality funding from Safer Leeds for owner occupiers and the private rented sector . The initiative has been led by the neighbourhood policing team and supported by East North East Homes and Leeds Anti Social Behaviour Team officers and has included free crime prevention materials such as timer switches, trembler alarms and crime prevention advise specific to the modus operandi . In addition East North East homes have offered burglar alarm systems to all victims of burglary and also additional target hardening to any vulnerable or repeat victims, this has provided great reassurance to residents .



3.22 Progress April 2011 to March 2012.

- 3.23 Offences were 28% lower between April 2011 and March 2012 (123 fewer offences) compared with the same period last year. The year to date average is 26 offences per month and Chapel Allerton ward attained Milestone 1 in 2011/12.

Month	Cumulative 2011-12	Cumulative 2010-11	Change
Apr	20	43	-23
May	57	80	-23
Jun	90	103	-13
Jul	123	122	1
Aug	154	137	17
Sep	171	148	23
Oct	193	209	-16

Nov	214	272	-58
Dec	243	314	-71
Jan	271	374	-103
Feb	286	414	-128
Mar	409	432	-123
% Change Year to Date -28%			

3.24 **Most Active/Amber Nominals/Burglary Group**

3.25 Following a short pilot during the summer of 2011 we have now implemented a new sub group of the North East Divisional Community Safety partnership that manages most active and amber burglary offenders focussing initially in the strategic areas of concern that fall outside of the existing Integrated offender management system. A process has been drawn up using the principles of the Integrated offender management structure and support has been agreed with key partners including Youth Offending service, Signpost, Drugs offender Management Unit, Probation, Leeds Anti Social Behaviour unit, East North East Homes, Aire Valley Homes and North East Police Division. The work is now linking into the 100 Methodology at cluster level. The group meets on a monthly basis and looks at how best to manage individuals offending behaviour through offering support or taking enforcement action.

3.26 **Neighbourhood Management Tasking Key Achievements 2011/12**

3.27 The eleven neighbourhood management tasking teams continue to meet six weekly and are still firmly embedded into agencies day to day business and members continue to attend and support meetings.

3.28 This is not an exhaustive list of activities but includes key achievements from each of the neighbourhood management tasking teams within the inner north east area

3.29 **Chapel Allerton**

- Chapel Road – Probation have completed a detailed litter clearance and trim of this unadopted highway which has been very positively received by residents. In addition, Oak Road which has previously not been adequately swept due to parked cars has been cleared and residents made aware of when the sweep will take place so they can move their vehicles and ensure a higher service is received.
- Targeted improvements to the clearance site in Beckhills including cutting back of the vegetation and removal of canopies to reduce break-ins and improve the look of this area.
- Mobile Site – Chapeltown Road. Improvements managed through the tasking team and planning compliance. The land owner has now secured the site with new, improved and smarter looking fencing and cleared the site of rubbish and vegetation..
- Operation Champion July - Hamiltons /Granges –This particular operation focussed on Anti social behaviour enforcement and gaining residents views. Agencies attended and consulted with the community, delivered anonymous

surveys and sought feedback on recent activity. A good response was received in particular to help justify more rigorous policing plans for bonfire night.

- August 2011 – 7 days of partnership clean up and environmental activity in support of the Police and community members following the disturbances in Chapeltown that took place. Agencies involved included East North East Homes, Leeds City Council and West Yorkshire Probation service .
- August 2001 – 3 days of pre carnival environmental clean up work and 3 days following to remove waste material and potential missiles from the local area and any identified flashpoints.
- There has been several proactive policing initiatives such as Operation Hunter, Cleansweep and . Bullseye that have tackled outstanding arrests, stolen vehicles, bicycle marking, metal theft and receivers of stolen goods
- Two licensing operations have taken place to tackle drug use in on-licence premises the other to tackle sales to minors from off-licence premises
- Operation around Bonfire Night in Chapeltown – operations including test purchases in shops selling fireworks and visits by West Yorkshire Fire Service , visits to Youth clubs by WYFS to inform people about the dangers of fireworks , probation completing a full clean of the vulnerable areas alongside LCC Streetscene staff. Leedswatch CCTV Van was deployed for the full week and police community safety officers worked closely with the environment team to identify gardens with potential missiles in and serving waste in garden letters.
- Operation Champion in December 2011 involved Police supporting school attendance officers in completing a truancy sweep (22 young people taken back into school), Environmental action team staff attended and patrolled along with ENEHL estate caretakers and cleared hot spots areas of rubbish.

3.30 Roundhay/Moortown

- Operation Burst – A partnership operation to tackle Anti social behaviour and street crime in Moortown. Reductions have been seen in street robbery we are working closely with LASBT, Youth Service, East North East homes, Housing Associations (Leeds Jewish Housing) and Schools. Safer Leeds – Leedswatch CCTV van has also been deployed alongside police enforcement work on offenders.
- Operation Aphid - A partnership operation with Leeds City Council Parks and Countryside to prevent and reduce ASB and street crime in Roundhay Park area. High visibility patrols resulted in an arrest for street robbery where property was recovered and suspect subsequently admitted two offences.
- Operation Bulrush – An operation to tackle the increase in theft of integrated satellite navigation systems from Audis and VW's - particularly in Roundhay area. Work ongoing with various police departments, crime reduction at Safer Leeds and Audi dealers.
- The closure of the "Streets of Leeds" public house following a protracted investigation by Leeds City Council Licensing Department and Local Officers into the licensee and manager was a success for partnership work. The license was revoked.
- Operation Bellwether - burglary reduction work including officers working night shifts, burglary revisits ongoing by Police community safety officers with crime reduction advice and distribution of trembler alarms. The trembler alarms have activated on several occasions and have been successful in deterring burglars and preventing burglaries occurring .

- Operation Aphid - A joint partnership approach with Parks and Countryside, and Youth Services to prevent street crime and Anti social behaviour in Roundhay park area during summer holidays which included a Pedal cycle marking project.
- Work on environmental issues such as overgrown ginnels (Wensley Green) actioned by the Community Payback team.
- Operation Binary - An ongoing proactive activity to tackle ASB/drug dealing/street crime in the Moortown Ward Stonegate estate. Environmental enforcement has been taken with regard to overgrown trees and gardens which are impacting on community safety in ginnel areas. Initial consultation work has been undertaken to pursue closure of Stonegate Grove through alleygating. Improvements to street lighting completed Stonegate Green. Tenancy enforcement work with Housing Associations (Unity and Leeds Fed) working towards eviction (which has now occurred Jan 2012).
- Arrest phase completed with regard to covert cctv work in area. This has resulted in arrests for street robbery, criminal damage, and drugs supply and working closely alongside LASBT towards ASBO's for some.
- Operation Bobby - An operation focussing on Cranmer Bank estate, Moor Allerton library area (Alwoodley Ward), and Queenshills (Moortown Ward). Several young people have been identified as involved in Anti social behaviour and street crime. A partnership problem solving group has been set involving East North East Homes, West Yorkshire Police, Leeds Jewish Housing, LASBT, Youth Services and local schools

3.31 Thematic Sub Groups and Activities

3.32 Gang Prevention Strategy

3.33 The Chapeltown Gang Prevention Strategy Group has now been operational since 2009 and continues to meet on a quarterly basis. The meeting is chaired by Timothy Kingsman (Superintendent Operations) at North East Police Division . The strategy continues to focus on the following three strands and reports directly to the North East Divisional community Safety Partnership :

- Community Engagement and Cohesion
- Diversionary and Youth Working/ Education
- Enforcement and Offender Management

3.34 Operation Quartz

3.35 Operation Quartz has continued to successfully prevent the emergence of gun and gang related problems experienced elsewhere in the United Kingdom. Police operations to keep drugs and associated issues out of the Leeds area have been conducted as part of planned integrated offender management tactics to prevent and deter criminality and to rehabilitate and resettle ex-offenders. The Chapeltown area remains a key priority within the city and represents approximately 25% of warrants executed and arrests made

3.36 Chapletown Independent Advisory Group (IAG)

3.37 The IAG continues to meet on a six weekly basis . The group is made up of made up of individuals and community leaders representing the different ethnic groups within the area to provide operational advice and guidance on Policing issues and practises and serves as a key engagement tool. Since the disorder in August last year the meeting is now rotating around different venues such as The Sikh Temple, The Islamic Centre and West Indian Centre with our next meeting anticipated to meet at the Polish Centre . This has been welcomed by the group members and has improved cohesion , facilitated new relationships and key contacts. One constituted member of the group commented that although they had lived in Chapeltown over 20 years they had never entered into such premises . Comments from the community and the latest public confidence and satisfaction performance figures support that relationships with the police have greatly improved. Over the last 12 months we have seen an increase in community intelligence via questionnaires but more recently after the disorder , these have included anonymous phone calls or messages left on the Inspectors mobile phone identifying local individuals involved in crime , which is a result of the trust that has been built and placed with the neighbourhood policing team inspector

3.38 Challenge and Support

This meeting was set up as a sub group of the ward 'Crime and Grime' tasking to specifically target the ASB or criminal nominal's within the ward. It was originally developed to make sure there was a coordinated approach to tenancy management across all Registered social landlords and ALMO tenancies.

In 2010 the decision was taken to adopt a Challenge and Support model as this offered a greater opportunity to improve and manage behaviour. This involved a widening of the attendance at the meeting and the process changing to cover both the punitive enforcement action and also the supporting elements. The emphasis on this was both to put in place local support using existing resources where possible, balance the punitive and supporting roles and ensure agencies understand each other and don't work against each other. The overall aim is to place the correct intervention to each individual by the best placed agency however there are also referrals which can be made to other meetings (i.e. Children Leeds Panel) which have been made in certain circumstances.

The meeting has also served to identify and assist with information gathering in a number of Safeguarding cases and the links between agencies in the children's services and tasking arenas continues to improve and offers some significant improvements to at risk families.

There have recently been discussions between the local clusters and tasking partners to create a 'Challenge, Guidance and Support' which would merge the above meeting with the Intervention Panel for the CHESS and NETWORKS clusters. This has been agreed by the key partners and is in the process of being developed with an aim to have this fully integrated and operating by October 2012. The project works alongside the top 100 methodology

3.39 Ben Kinsella Funds

3.40 In October 2011 a bid was submitted to the Princes Trust on behalf of 'Free2bMe' girls group to develop an anti-gun /knife campaign in Chapeltown using poetry, music and dance . We have just been notified that we secured £3,000 for the project to go ahead. A project group has been put together to support the girls , it is anticipated to have key messages ready for publicity in July/August 2012 .

3.41 Chapeltown Youth Development Centre/ Mentoring

3.42 CYDC has commissioned Community Pathfinders to provide coaching and mentoring expertise to a number of volunteers to equip them with additional relevant skills. The overall programme is entitled "Each One Teach One".

3.43 Community Pathfinders is a social enterprise, not for profit organisation, whose members are self-employed coaches, mentors and trainers.

3.44 A task and finish group made up of statutory partners has been established to support the development and sustainability of the scheme.

3.45 There are a number of identified outcomes that will benefit CYDC, the local community and partner agencies:

- The establishment of a sustainable skill set in the local community, owned by the community, which will encourage the continuing development of individuals and organisations.
- The formation of a local network of trained coaches/mentors who provide an option when effective lines of communication are sought as a matter of priority.
- The creation of a model that offers alternatives to those who are at risk of offending or re-offending, or who are disengaged with society, when traditional methods appear to have failed.

3.46 The initial course for the "Each One Teach One" programme ran on 23rd – 25th January 2012 and included 13 delegates (at a total cost of £7800). The selection process required the submission of a written application and attendance at a subsequent interview for those meeting the criteria As expected, there was a varied mix of experience, knowledge and backgrounds among the delegates, this is essential if the key element of rapport with those referred is to be achieved. For some of the more challenging cases, the most effective mentors will be those who have experienced poor life choices themselves and have learnt lessons from them. Following successful attendance on the three day module of the course, delegates are required to submit written assignments and undertake a total of 36 hours practical coaching / mentoring activity (with referrals from CYDC) in order to meet the ILM criteria for accreditation. Expectations are that everyone will complete the course by September 2012.

3.47 Installation of CCTV

- 3.49 Funding has been identified for 3 CCTV units (as specified below) to be installed within Chapeltown to help improve the coverage, improve resident confidence, gather information and monitor the hot spots identified in the analysis above. Funding has been committed from Safer Leeds, East North East Homes, North East Police Division and ward councillors (well being budget)

1. Nassau Place on the junction with Grange View
2. Nassau Place on the junction with Hamilton Avenue
3. Saville Drive on the junction with Saville Avenue

Due to the August shooting incident , one of the community demands was additional CCTV coverage of Norma Hutchinson Park and the Saville Mount / Avenue area. From a community perspective this is the priority installation out of this project and was a key element of the plan emanating from the community discussions immediately following the disorder in August 2011. The scheme is currently in development

3.50 Bonfire Night Bonanza

- 3.51 A task and finish group was set up to plan for potential tensions/ criminal activities over the Bonfire period, this was a particular difficult time due to the funeral of Gavin Clarke . It was agreed that success would depend on voluntary/ community sector promoting the event with young people. An agreement was reached that the Free2bMe group with the assistance of statutory partners including Breeze would help with the planning of the event .This involved consultation with local young people to identify what activity they would like to be involved with while at the same time completing conflict and resolution training with over 200 young people and stressing to all the potential Police actions that would take place were there any repeats of previous years. This followed a consultation with the wider community in August 2011 asking about the major concerns over the bonfire night period evidencing that the majority of the community would support positive action. Funding was obtained from local school clusters for an event until midnight on this date and staffed by local volunteers and local authority officers. Over 250 young people attended the event and there was a significant reduction in disorder over this period in the locality which was seen by all concerned as a significant success and something of a breakthrough. A group will be set up in July for the Bonfire Night 2012

3.52 Chapeltown Youth Partnership

- 3.53 A new youth partnership has been re –launched in January 2012 for the Chapeltown area to bring together all voluntary organisations that work with young people alongside Leeds City Councils Youth services. The partnership will aim to build on existing good relationships, identify any gaps in provision , maximise funding opportunities by supporting third sector organisations and avoid duplication. The partnership will be chaired and facilitated by East North East area management Team.

3.54 Active Citizenship Project

- 3.55 Together for Peace ran a successful British Council (Active Citizens) project in 2011 and two individuals who are currently volunteers within voluntary youth groups in Chapeltown participated in the project. The two individuals work in CYDC and Deen Enterprise, working with young people from mainly BME backgrounds who are at risk of becoming involved in crime and anti social behaviour. Together for Peace secured a small amount of funding to enable the Active Citizens participants to develop a project to benefit their own community and to cement the working relationships between the two voluntary organisations. The project was agreed to facilitate young people of different backgrounds to work together on common themes in the community. There has also been an increase in vehicle crime and driving offences in Chapeltown brought to public attention of the wider community by a fatal accident in the locality. The project will bring together young people between ages 17 and 25 to learn about their community, interact with the emergency services giving them knowledge about their roles and also road safety, the highway code and driving legislation. The programme will include activities to develop transferable skills such as communication, problem solving and study skills and will involve the group identifying a project they can implement to benefit the community. A selected number of young people (up to 16) will be offered a residential opportunity and 10 of the participants will then go on to be provided with practical driving lessons., fair selection criteria has been used throughout the project to select the right individuals to benefit from each phase of the project.
- 3.56 The project commenced in February with an open day at The Prince Philips Centre and is now into Phase Two . Leeds city Council and West Yorkshire police have been involved in the planning of the project and supported the group to gain match funding from small grants , Proceeds of crime funding and East North East Homes Area Panel . An evaluation will take place on completion of the project and if proved successful and value for money we will be exploring funding opportunities for a possible project in the Harehills Area.

3.57 Ending Gang and Youth Violence - expression of interest: Home Office

- 3.58 The second tranche of the Home Office funding. Was launched 16 local authorities including Leeds were identified by the Home Office and asked to submit expressions of interest through problem profiles with up to 8 of these due to receive funding and support following the assessment. An expression of interest was submitted in Feb , unfortunately our bid was unsuccessful, the feedback suggested that the issues in Leeds are not on the same level as those in other areas and this was the reason the funding was not forthcoming. However the overall feedback on the quality of the submission was very positive, it was well laid out, informative and one of the higher quality profiles submitted. The selection was completed by representatives from the Association of Chief Police Officers , the Home Office, Communities and Local Government and the Department for Works and Pensions whom compared evidence from other authorities where there are specific gangs directly affiliated with geographic areas and organised criminality and are in constant conflict with each other. The fact that Leeds is not in this situation is something of a positive.

3.59 Off Road Bikes /West Yorkshire Police

- 3.60 The Inner North East area committee (June 2011) contributed towards the lease costs to retain 2 motorcycles within the division for a 12 months period, The North East Police Division continued to fund the running costs such as fuel , specialist uniform and staff resources . The information below outlines the performance and some examples of successes in the area committee area

August 2011 October 2011

Stop searches: 2

Calls attended: 6

Arrests/Summons:1

November 2011 January 2012

Stop searches: 1

Calls attended: 5

Section 59 warnings: 1

Vehicle seizures: 3

Arrests/Summons:7

Cannabis Warnings: 1

February 2012 April 2012

Stop searches: 3

Calls attended: 7

Arrests/Summons: 1

- 3.61 The police unit work alongside Leeds City Council Parks and Countryside Riders at events such as operation champions and days of action, working with agencies such as warrants officers, Vehicle operative service agency (VOSA), Drivers and Vehicle License Agency (DVLA) and housing. The Unit also attends youth clubs and schools to give inputs promoting the unit and preventative work. We are utilised to search for and locate high risk missing persons in open ground and woodland. The Unit often patrol Roundhay Park and attended the Redbull Flugtag Event in the summer. Below is one quote from the Neighbourhood policing website which advertises the good work undertaken and shows the vast reduction in complaints since the off road unit was reformed.

“The North East Leeds Off Road Unit, funded in partnership with your local councillors and working alongside Leeds Council Parks and Countryside Officers have reduced calls by a massive 45% compared to the same period in 2010. In 2010 we received 282 calls, this year we have received 157.”

Examples

- Following a complaint from a concerned resident that two motorcycles were racing around the Miles Hill Estate two motorcycles were stopped and both were seized. One of the motorcycles was revealed to have been cloned. Due to this officers re attended Miles Hill Street and seized a third motorcycle which was also displaying a false number plate.
- A call from residents in Chapeltown led to the arrest of a young man who failed to stop for the off road unit. His noisy, unregistered and unlicensed motorcycle was seized and destroyed and he received a final warning.
- In response to concerns of speeding in and around local schools enforcement has been stepped up and local neighbourhood officers trained in the use of the speed gun.
- Operation Bowfin, a multi agency operation in the Miles Hill/Potternewton area resulted in the arrest of a well known burglar and many tickets being issued to priority targets for defective tyres and speeding.

3.62 Hate Crime MARAC

3.63 Co-ordinated multi agency working is recognised as the most effective response to all issues of crime and disorder, including agency responses to the victims and perpetrators of hate crime. The hate Crime Multi-Agency Risk Assessment Conference (HC MARAC) continues to meet monthly . The overall objectives of the group is to:

- Support and assist victims of hate crime in order to protect them and ensure that they are not re-victimised.
- Ensure that effective co-ordinated multi agency enforcement action is taken against perpetrators of hate crime to prevent their re-offending and to ensure successful prosecution outcomes at Court.
- Contribute to the “Hate crime reduction agenda in Leeds”.

3.64 Overall the Inner North East area has shown a decrease of 18.75% of hate crimes reported, and this equates to a reduction of 12 crimes - a total of 52 crimes reported compared to 64 during 09/10.

3.65 Domestic Violence MARAC

3.66 The North East Divisional MARAC continues to meet monthly to develop multi-agency interventions to support victims of domestic violence. Overall a very successful year in relation to reduction of repeat victimisation of cases managed through the MARAC.

3.67 CCTV - Leedswatch

3.68 Leedswatch provides a monitoring service for public space surveillance cameras covering open spaces across Leeds. The CCTV control room is staffed, and cameras are recorded 24 hours per day, 365 days a year. The service also provides two mobile CCTV vehicles for deployment within communities across Leeds.

- 3.69 The main objective of the service is to reduce crime and the fear of crime through the use of CCTV technology, leading to improved crime prevention, and an increase in the detection and prosecution of offenders.
- 3.70 CCTV is one of a number of Service functions delegated to Area Committees. The Area Committee's role in relation to this function is to 'maintain an overview of the service in the Committee area and receive regular information about it.
- 3.71 The Leedswatch service works in partnership with a large number of internal and external partners such as; Urban Traffic Control (UTC), Emergency Planning, Leeds Anti-Social Behaviour Team (LASBT), West Yorkshire Police, WY METRO and other Local Authorities across the West Yorkshire sub-region
- 3.72 There are currently a total of 7 public space surveillance CCTV camera's monitoring the North East Inner Committee Area, via the Central CCTV Control Room at Middleton, they are located in the following street area as follows:
- 3.73 Newton Road, Harehills Ave, Cowper Street, Francis Street, Saville Mount, Nassau Place, Forde Green
- 3.74 Within the last 12 months the mobile vans have been deployed for a total of 4 months within the Killingbeck Policing Area and patrols have been deployed in specific areas highlighted by the police specifically in relation to identified crime 'hot spots'. The vehicles are evenly deployed throughout the year between the three policing divisional areas. The deployment of the mobile vans is co-ordinated by the police.
- 3.75 There are no current charges levied to the North East (Inner) Area Committee regarding public space surveillance camera(s) for 2011/12
- 3.76 The Leedswatch service this year has undertaken a critical role in the delivery of the Leeds Burglary Reduction programme, assisting with the identification and detection of offenders using the City wide Leedswatch network, mobile CCTV vans and the West Yorkshire Police Automatic Number Plate Recognition (APNR) system to detect cross boundary offenders and supporting city wide and locality based operations.
- 3.77 In total within the last 12 months there have been a total of 216 arrests recorded between 1st April 2011 and March 31st 2012 within the police North East Policing Area, covering a wide range of offences such as drugs, burglary, criminal damage, arson, assaults, robbery, theft including theft from motor vehicles, offensive weapon, public disorder and drink driving offences.
- 3.78 Within the North East (Inner) Committee Area there have been a total of 16 arrests recorded between 1st April 2011 and March 31st 2012 in relation to a wide ranging number of offences as listed above.
- 3.79 CCTV footage has been requested in relation to 1757 incidents within the North East Leeds Policing area for a various number of offences which provides evidence in relation to the criminal investigations relevant to identification of

suspect(s) and a total of 52 incidents relate to the North East (Inner) Committee Area.

3.80 Improving the Out of Hours Noise Nuisance Service

Noise nuisance is a major cause for concern across the city. This service was transferred from Environmental Services April last year. Work is still taking place to look at how closer working can be developed with the new anti social behaviour casework teams to deal with persistent offenders and to work in liaison with Customer Access and Performance in providing additional staff to assist in the logging of such Out of Hours Noise Nuisance Calls.

- 3.81 Supporting the city's most vulnerable residents is also a priority. The LeedsWatch service is now responsible for providing a first response to Care Ring alarms. On call 24 hours a day, 7 days per week, this service responds to alarms from mainly elderly clients who may have fallen or find themselves in need of support. Officers attend to the alarm call and contact emergency services, family members or other appropriate individuals, staying with the client to provide support and re-assurance until further help arrives. Improving the information and intelligence we provide to LeedsWatch customers is a key priority for the service. We are reviewing how this data is recorded, in the way in which we can provide accurate information to service users, to provide more detail and improve the services analytical and intelligence capacity.
- 3.82 LeedsWatch service is now responsible for the delivery of a number additional service responsibilities. In order to ensure that the service is making the best use of its resources, a full service restructure has now commenced with a view to offering best value for the department. In particular discussions are still taking place with the Anti-Social Behaviour Teams, Environmental services, West Yorkshire Police and the ALMOs to look at how the various services can better linked together to improve service delivery, collate accurate information for service users and to provide a more pro-active response to issues of public concern, through improved collating of data / information and intelligence sharing between agencies.

3.83 Leeds Anti Social Behaviour Team

- 3.84 Prior to implementation of the multi-agency Leeds Anti-social behaviour Team (LASBT) Anti Social Behaviour was responded to across a range of agencies each working to differing thresholds and service standards making direct comparison of city wide performance data difficult.
- 3.85 Customer satisfaction with the case outcome is influenced by many factors including the victims own expectations, and the complexity of the case. LASBT procedures are customer focused. For example, in supportively managing victim expectations, exploring potential solutions, and identifying and responding to individual needs. LASBT works to resolve cases at the earliest opportunity. Customer feedback suggests that the process is working. Comments include *'efficient and professional, response received'* from an *'invaluable service'*.

- 3.86 Customer satisfaction data is collated at case closure through customer (victim) surveys, which seek customer satisfaction levels in relation to various aspects of the service (please refer to chart below)

City Wide - Annual Figures	2008/9	2009/10	2010/11	2011/12
% Satisfaction with the case outcome.	61.6%	66.1%	60.3%	75.0%
% Satisfaction rating with overall service	72.2%	73.7%	70.4%	81.3%

- 3.87 LASBT data for 2011/12 has been drawn from on a total of 540 surveys from 1562 named victims (an overall response rate of 34.6%) giving a 95% confidence level with a 3.41% confidence interval.
- 3.88 When compared with former ASBU survey responses, there have been significant improvements as a result of this joined up approach to ASB service delivery. LASBT data collated during 2011/12 will form the baseline from which future performance targets can be set. It is anticipated that performance data with regards to satisfaction in relation to outcomes and overall service will be available at ward level shortly.
- 3.89 The charts below outline the number of enquiries received, new cases opened and a summary of the legal outcomes.

LASBT Enquiries Received 2011/12	
Ward	Grand Total
Chapel Allerton	117
Moortown	46
Roundhay	48

LASBT New Cases Opened	
Ward	Grand Total
Chapel Allerton	44
Moortown	21
Roundhay	14

LASBT Legal Outcomes 2011/12						
Ward	Application to discharge a juvenile ASB order	Emergency Injunction with powers of arrest	Injunction	Possession	Possession secure	Grand Total
Chapel Allerton			1	3	1	5
Moortown	1					1
Roundhay		1	1			2

3.90 Ward Performance

Ward	7) Overall, how satisfied were you with the service?						Grand Total	% 'Satisfied' or 'Very Satisfied'
	Very Satisfied	Satisfied	Neither Satisfied nor Dissatisfied	Dissatisfied	Very Dissatisfied			
Chapel Allerton	4	3	2		1	10	70.0%	
Moortown	3		1	1		5	60.0%	
Roundhay	2	2				4	100.0%	
Grand Total	9	5	3	1	1	19	60.9%	

3.91 Overall Performance of North East Divisional Community Safety Partnership and Ward crime statistics - MARCH 2012

Reduce Crime and its Impact					
Reduce the level of Total Recorded Crime	D/I	22,590	▼	24,693	Down 8.5% (2103 fewer crimes) compared with the same period last year
Reduce the level of Serious Acquisitive Crimes	7,169	5,745	▼	7,169	Down 20% (1424 fewer crimes) compared with the same period last year
Reduce the level of Domestic Burglary	3,434	2,946	▼	3,615	Down 19% (669 fewer crimes) compared with the same period last year
Reduce the level of Violent Crime	D/I	3,845	▼	4,305	Down 11% (460 fewer crimes) compared with the same period last year
Reduce the level of Assault with Injury	D/I	1,526	▼	1,741	Down 12% (215 fewer crimes) compared with the same period last year
Effectively Tackle ASB					
Reduce the proportion of residents who believe that ASB has increased in their local area	13.1%	12.0%	▼	12.4%	Variation from target Trajectory -1.14%
Reduce the proportion of repeat locations for ASB	D/I	11.0%	▼	11.0%	To Feb-2012, 20 fewer repeat locations when compared with the same period last year
Improve the percentage of customers/victims happy with the time taken to respond to their enquiry (LASBT 4 week survey)	B/Y		▲		Divisional breakdown from LASBT under development
Improve the percentage of customers/victims satisfied with the case officers investigation to date (LASBT Closed Case Survey)	B/Y		▲		
Improve the percentage of customers/victims that were satisfied with the case outcome (LASBT Closed Case Survey)	B/Y		▲		
Improve the percentage of customers/victims that were satisfied with the overall service (LASBT closed survey)	B/Y		▲		
Improve Safeguarding & Reduce Vulnerability					
Reduce the repeat victimisation rate for MARAC domestic violence cases	19%	11.0%	▼	11.0%	Rolling 12 months to Feb, 193 cases, 22 repeats

YTD = year to date

PYE = predicated year end

D/I = diagnostic indicator, no target set as contributes to a set indicator (proxy measure)

B/Y = baseline year

PY= Rolling 12 month previous year

3.92 Crime & ASB: 2011/12

3.93 Overall a really successful year in relation to recorded crime and Anti social behaviour. Across the Inner North East area committee there has been an overall reduction of 498 recorded crimes and 1046 less anti social behaviour calls .

3.94 The below statistics show crime and anti-social behaviour from 1st April 2011 until March 31st 2012 by ward areas compared to the same dates for previous year.

	ROUNDHAY			
CRIME	2010/11	2011/12	Difference	% Inc / Dec
AGGRAVATED TWOC	4	5	1	25.00
ARSON	20	13	-7	-35.00
BURGLARY DWELLING	279	223	-56	-20.07
BURGLARY OTHER	122	154	32	26.23
CRIMINAL DAMAGE - BUILDING NON DWELLING	19	13	-6	-31.58
CRIMINAL DAMAGE - DWELLING	62	55	-7	-11.29
CRIMINAL DAMAGE - MOTOR VEHICLE	97	69	-28	-28.87
CRIMINAL DAMAGE - NON SPECIFIC	19	15	-4	-21.05
INTERFERENCE WITH VEHICLE	20	39	19	95.00
ROBBERY	48	44	-4	-8.33
THEFT FROM PERSON	24	23	-1	-4.17
THEFT FROM VEHICLE	379	304	-75	-19.79
THEFT OF VEHICLE	18	12	-6	-33.33
TWOC	23	7	-16	-69.57
VIOLENT CRIME	180	160	-20	-11.11
Grand Total	1314	1136	-178	-13.55

ANTISOCIAL BEHAVIOUR CALLS	853	646	-207	-24.27
HATE CRIME	17	10	-7	-41.18

	MOORTOWN			
CRIME	2010/11	2011/12	Difference	% Inc / Dec
AGGRAVATED TWOC	2	1	-1	-50.00
ARSON	3	11	8	266.67
BURGLARY DWELLING	265	240	-25	-9.43
BURGLARY OTHER	68	88	20	29.41
CRIMINAL DAMAGE - BUILDING NON DWELLING	5	12	7	140.00
CRIMINAL DAMAGE - DWELLING	64	43	-21	-32.81
CRIMINAL DAMAGE - MOTOR VEHICLE	70	57	-13	-18.57
CRIMINAL DAMAGE - NON SPECIFIC	19	14	-5	-26.32
INTERFERENCE WITH VEHICLE	7	41	34	485.71
ROBBERY	39	34	-5	-12.82
THEFT FROM PERSON	9	10	1	11.11
THEFT FROM VEHICLE	195	199	4	2.05
THEFT OF VEHICLE	12	7	-5	-41.67
TWOC	10	5	-5	-50.00
VIOLENT CRIME	114	127	13	11.40
Grand Total	882	889	7	0.79

ANTISOCIAL BEHAVIOUR CALLS	772	558	-214	-27.72
HATE CRIME	10	7	-3	-30.00

CHAPEL ALLERTON				
CRIME	2010/11	2011/12	Difference	% Inc / Dec
AGGRAVATED TWOC	9	5	-4	-44.44
ARSON	22	21	-1	-4.55
BURGLARY DWELLING	432	309	-123	-28.47
BURGLARY OTHER	146	123	-23	-15.75
CRIMINAL DAMAGE - BUILDING NON DWELLING	29	37	8	27.59
CRIMINAL DAMAGE - DWELLING	240	176	-64	-26.67
CRIMINAL DAMAGE - MOTOR VEHICLE	197	224	27	13.71
CRIMINAL DAMAGE - NON SPECIFIC	45	44	-1	-2.22
INTERFERENCE WITH VEHICLE	15	50	35	233.33
ROBBERY	96	74	-22	-22.92
THEFT FROM PERSON	56	51	-5	-8.93
THEFT FROM VEHICLE	344	234	-110	-31.98
THEFT OF VEHICLE	23	24	1	4.35
TWOC	16	16	0	0.00
VIOLENT CRIME	411	366	-45	-10.95
Grand Total	2081	1754	-327	-15.71

ANTISOCIAL BEHAVIOUR CALLS	1682	1057	-625	-37.16
HATE CRIME	37	35	-2	-5.41

3.95 Public Confidence and User Satisfaction in the Police (Roundhay, Moortown and Alwoodley)

Public Confidence	March 2011	March 2012	
Confidence in local policing	69.3 %	70.3 %	+ 1.0
Overall Satisfaction	85.4 %	88.0 %	+ 2.6
Perceptions of ASB Increasing	6.9 %	7.3 %	+ 0.4

3.96 Public Confidence and User Satisfaction in the Police (Chapel Allerton)

Public Confidence	March 2011	March 2012	
Confidence in local policing	64.3 %	69.1 %	+ 4.8 %
Overall Satisfaction	81.4 %	83.6 %	+ 2.2 %
% of residents who think ASB has increased	11.5 %	8.9 %	- 2.6 %

4 Corporate Consideration

5 Consultation and Engagement

- 5.1 The North East Divisional Safety partnership works in partnership with the voluntary and community sector and when necessary carries out statutory consultation as appropriate

6 Equality and Diversity / Cohesion and Integration

- 6.1 Consideration is given to the equality impact of delivering the Safer Leeds strategy across North East Police Division . Where a negative equality impact is identified action will be taken to mitigate the impact or risk.

7 Council policies and City Priorities

- 7.1 The North East Divisional community safety partnership delivers directly against The Safer and Stronger Communities Board Partnership plan 2011-2015.

8 Resources and value for money

- 8.1 The work undertaken by the DCSP is underpinned by maximisation of resources through effective partnership work.

9 Legal Implications, Access to Information and Call In

- 9.1 There are no exempt or confidential information contained in this report.
- 9.2 There are no legal implications associated with this report.
- 9.3 There are no key decisions associated with this report , so it is not subject to call in.

10 Risk Management

- 10.1 There are no major risks associated with the content of this report.

11 Conclusions

- 11.1 Overall a very successful year for North East in relation to overall crime reduction , public confidence and increased performance and perceptions in dealing with anti social behaviour . The DCSP will continue to prioritise burglary dwelling during 2012/13 to ensure reductions are sustained and further improvements are made.

12 Recommendations

- 12.1 Members are asked to continue supporting the Divisional Community Safety Partnership in relation to prioritising and tackling Burglary Dwelling during 2011/12 through partnership work at neighbourhood level.

13 Background documents ¹

- 13.1 Safer Leeds OBA Burglary Year End Report
- 13.2 Divisional community safety quarterly highlight reports

¹ The background documents listed in this section are available for inspection on request for a period of four years following the date of the relevant meeting. Accordingly this list does not include documents containing exempt or confidential information, or any published works. Requests to inspect any background documents should be submitted to the report author.

North East Leeds

April 2012

Confidence & Satisfaction

Performance Indicator	Target
Improve Confidence in Local Policing	62.4%
Improve the overall satisfaction rate of service users	87.6%
Improve the overall satisfaction rate for BME Service Users	84.1%
Improve the overall satisfaction rate for White Service Users	89.8%
<i>Emergency Response incidents (15 minute standard)</i>	
<i>User Satisfaction with being kept informed</i>	
<i>Public Confidence for BME residents</i>	
<i>Public Confidence for White residents</i>	
<i>Average number of days taken to locally resolve complaints.</i>	

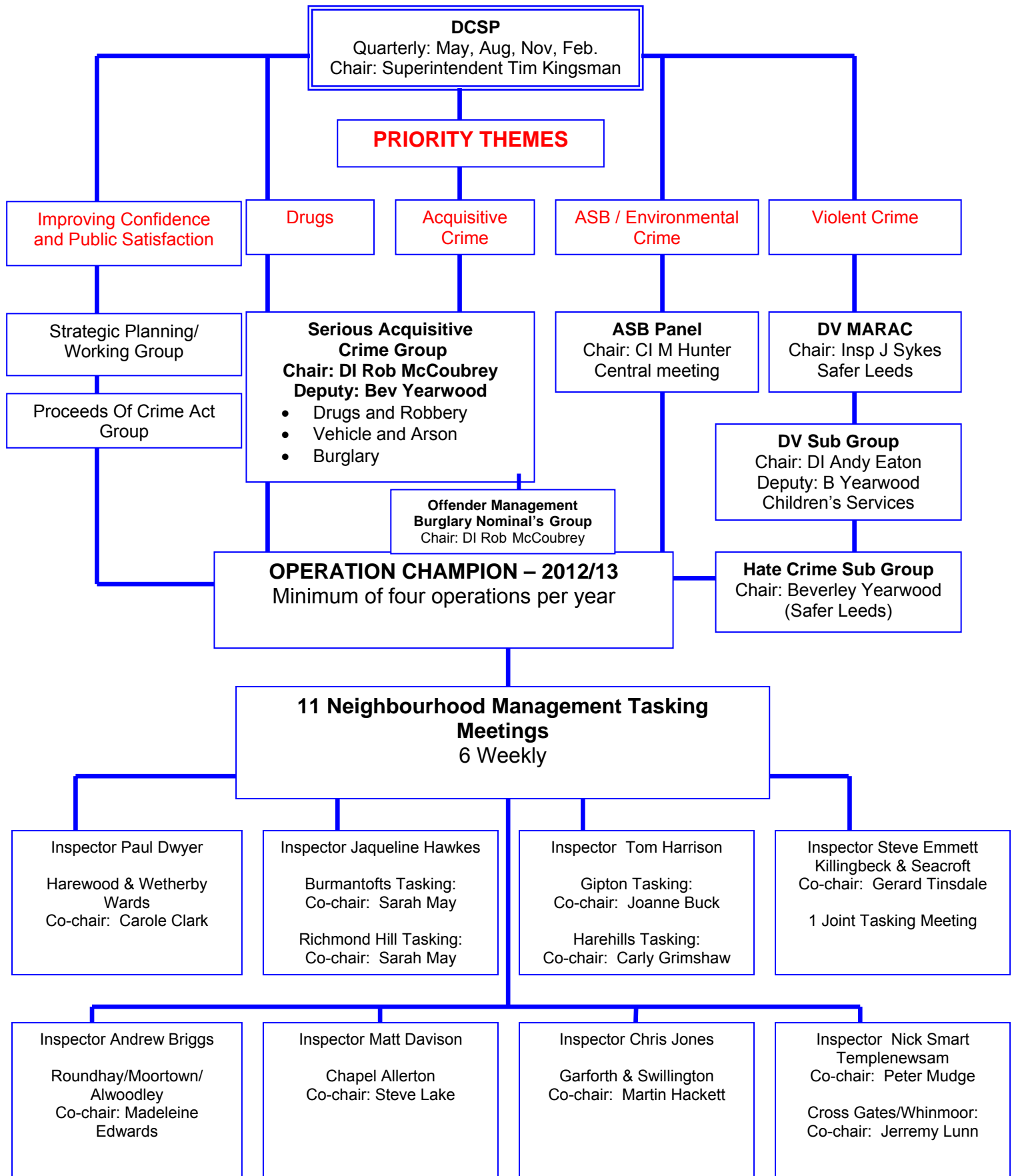
Local Policing

Performance Indicator	Target
Continue to tackle the level of acquisitive crime	5512
Reduce perceptions of ASB in local area	11.9%
Burglary Dwelling recorded	2713
<i>Assault with injury recorded</i>	
<i>Total Crime recorded</i>	
<i>ASB recorded</i>	
<i>Metal theft recorded</i>	

Protection of the Public from Serious Harm

Performance Indicator	Target
Continue to tackle the level of serious violent crime	83
Improve the repeat victimisation rate for domestic violence	39.9%
Stabilise the sanction detection rate for serious sexual offences	29.5%
<i>Domestic Violence Attrition</i>	
<i>Repeat offending rate for domestic violence</i>	

North East Division
Divisional Community Safety Partnership



Appendix C

Roundhay /Moortown				
POCA Ref	Date	Brief Description	Organisation	Amount Paid
308	08/04/2011	Holiday Club October 2011 - Running from 25th October 2011 until 28th October 2011, we will have a holiday club. We will tell the story of guy Fawkes in preparation for bonfire night.	St Andrews Roundhay Unite Reformed Church	£250
310	08/04/2011	Elmete Enterprise Club - Mask making using latex and clay to produce high quality products to sell at a comic convention. Pupils sell products to raise money for charity.	Elmete Cetral BESD SILC	£250
342	02/08/2011	Alderton Heights TRA - Alderton Heights TRA are a very active group and have successfully bid for funding (from the Outer NE Area Panel) to carry out external improvements to the blocks, including fencing, tarmac, improvements the drying areas and shrub beds etc. The group now take a lot of pride in the area and have 2 members who go out, around the blocks, litter picking, sweeping, and looking after shrubs. This request for funding would cover the cost for gardening equipment/tools, including a strimmer, which allows the group the tidy small areas where the grass cutters have missed. This will be stored in a lockable shed that the group have been given permission to use. In addition the group would also like to purchase a digital camera out of the grant, the group have 3 display cabinets in each of the foyers of the multi-storey blocks and would like to display/show residents what the community group have been doing.	Alderton Heights Tenants & Residents Association	£200
368	01/11/2011	Cold Calling Control Zone Signs - The main aim is to prevent incidents of door step crime, raise awareness of rogue traders who target vulnreable peops. To reduce crime.	West Yorkshire Joint Services	£236
369	03/11/2011	Lidgett Lane Allotment Association - to continue the replacement of the old southern perimeter chestnut paling with modern powder coated steel security fencing.	Lidgett Land Allotment Association	£250
372	04/11/2011	Junior Development - NLCC runs 10 junior teams and due to the increased numbers has had to hire other pitches on the Soldiers Field, we need to purchase a mobile scoreboard to accommodate this.	North Leeds Cricket Club	£250
378	15/11/2011	Moortown Historic Milestone Plaque - A plaque to give some history of Mooretown's historic milestone. The plaque would be fitted as soon as possible.	Moortown Community Group	£250
379	17/11/2011	Oakwood Lane Allotments - site structure - to add a metal security grill and anti-jemmy plates to our allotment store door as soon as possible. We expect this can be completed within 3-4 weeks of receiving any funding.	Allotment Committee/Gillian Walsh	£250
395	03/01/2012	Gledhow Cricket Club New Junior Section - setting up a junior cricket section for 2012, for 8 - 17yrs from Jan - April at Manor Carr high School and on Sat 7th Jan every wk until April.	Gledhow Sports and Social Club/Gledhow Cricket Club	£500
403	19/01/2012	Leeds Area Police Sports and Social Club - Leeds Area Police Sports and Social Club aims to provide quality facilities for both sport and social recreation for it's members and visitors.	Leeds Area Police Sports and Social Club	£500
404	19/01/2012	Community and Heritage Information Board for Gledhow Valley Conservation Area Group - Provide a focal point of information for local people to highlight the heritage and history of the consecration area and encourage pride in the rich environment and a sense of community awareness raising.	Gledhow Valley Conservative Area Group	£500
418	09/01/2012	Women's Group at PAFRAS - a day trip to London to attend a march and a poetry/cooking/story event on 8th March.	PAFRAS	£250

Chapel Allerton

POCA Ref	Date	Brief Description	Organisation	Amount Paid
314	11/04/2011	Chapeltown Youth Development Centre - Royal Wedding Street Party - April 29th 2011 Street Party for children under 10 & under, to celebrate Royal Wedding, to experience a traditional street party. Funding will be spent on food, deco, paper ware, cups, paper plates, plastic cutlery & refreshments.	C.F.Y.D.C (Chance)	£250
317	04/05/2011	Summer Play scheme - The Environmental play scheme will run from 26th July - 12th August and provides outdoor play opportunities and positive experiences for 50 children a day with an environmental theme. Activities include canoeing, barking mad tree day, dens and interaction with animals. This will be free for children below a certain age.	Meanwood Valley Urban Farm	£250
319	04/05/2011	Deen Enterprises Communitiy Forum - DECF provides three sessions per week since 2006, badminton, five side football, trips and holds weekly small group sessions from the ages of 6-16 on crime prevention.	Nelson Mandela Centre Leeds LS7 Ground Floor	£250
323	05/05/2011	Mandela Sports Hall Benches - The sports hall at Mandela is well used by local voluntary and community groups on a daily basis but there are no benches in the hall for the spectators or young people not involved in the current session to sit on.	Mandela Steering Group	£185
328	18/05/2011	Community outreach and Development Project - To purchase laptops for use in the community café (wifi)	Stainbeck Church	£250
332	19/05/2011	Chapeltown Cougars YRLFC - Chapeltown cougars is a new club in the community looking at developing rugby league. Our aims and long-term goals are to encourage children from the community to come along and take part in our fun training sessions leading up to entering local league (rfi) and play at a competitive level.	Chapeltown Cougars YRLFC	£250
340	02/08/2011	Free 2 B Me is a new Girls and Young women's group that runs sessions for Girls in the Chapeltown Area - We have consulted with the young girls around what activities they would like to be involved with - We intend to run nail art and beauty sessions from July onwards but require equipment and products to enable sustainability	Free2BMe	£250
352	02/08/2011	Carnival Costume Making 2011 - to engage with local young people in the designing of a carnival costume for entry into this years Leeds Children's carnival Show on the 21st August 2011	St. Kitts and Nevis Association Leeds	£250
374	07/11/11	Elderly Residents to go for Christmas Dinner - Money towards the local elderly residents in Northbrook Croft, Chapel Allerton area to go for Christmas Dinner.	Northbrook Croft Tenant's Association	£212.50
376	10/11/11	Christmas School Holiday Activity and Party -Christmas Crafts and a Christmas Party - in December School Holidays	Zest Health for Life	£250
398	12/01/12	Support to the Shamira Grant Celebration July 2012 - event will celebrate the life and commemorate the death of Shamirah Grant who was killed in a road traffic collision in Chapeltown. Community based event with approx 1500 people attending.	LCC ENE Area Management	£185
405	20/01/2012	Boxercise - to engage groups of people from all backgrounds for those known to staff from other agencies that are involved in ASB and racial tensions in Chapeltown. Ozbox teaches self discipline, channelling aggression and energy.	Deen Enterprise	£250
414	02/02/12	St mary's Community Garden - aim is to grow organic vegetables - money for soil, seeds/plants/seed trays/wood planking/garden fork/wood chippings	St Mary's Community Garden	£500
421	20/02/12	Each One Teach One - coaching and mentoring course to provide expertise to young people exposed to crime and illegal drugs activity.	CFYDC (chance)	£1000
425	24/02/2012	CYDC u13's - the team require waterproof tracksuits/kit.	CYDC u13's	£250
427	05/03/2012	ISWAC - Centre used by women and children to congregate is in need of a revamp-monies will assist in tidying up the décor and carpets.	ISWAC	£250